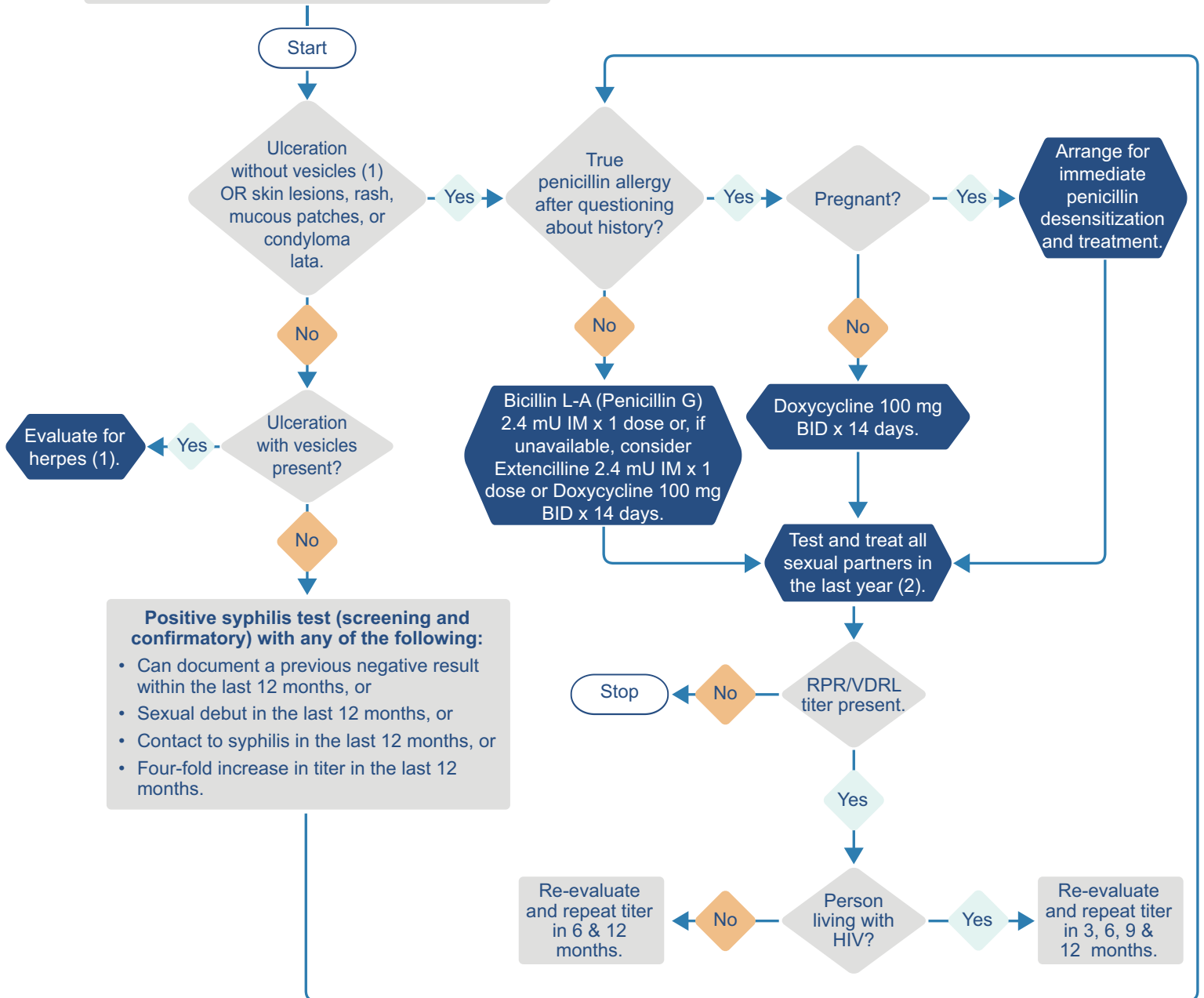


Early Syphilis Primary, Secondary, and Early Latent Syphilis Staging/Treatment Algorithm



If any signs or symptoms of neurosyphilis, ocular, or otosyphilis, consult infections disease specialist, ophthalmologist, or otolaryngologist immediately.



Footnotes:

- (1) If the ulceration is painful, consider co-infection with herpes
- (2) CDC Partner Testing and Treatment Guidelines:
<https://www.cdc.gov/std/treatment-guidelines/syphilis.htm>

This project is supported by 1 FPTPA006031-03-00 issued by the Office of the Assistant Secretary for Health of the U.S. Department of Health and Human Services (HHS) as part of a financial assistance award totaling \$1,000,000 with 100 percent funded by the Office of Population Affairs/OASH/HHS.